



Joining the International Cocoa Initiative



International
COCOA
Initiative

Why Join ICI?

At ICI, we work with our members and partners to identify, prevent and address child labour and the risk of forced labour in the cocoa supply chain, in line with international frameworks such as the UN Guiding Principles for Business and Human Rights and the OECD Due Diligence Guidance.

By becoming a member of ICI and joining our multi-stakeholder partnership, you will be committing to working towards the promotion of child protection, the protection of human rights and the elimination of child labour and forced labour in the cocoa sector.

We achieve more together

All actors in the cocoa sector have a shared responsibility to protect vulnerable children and support the fulfilment of their rights. To achieve our common ambition, ICI's strategy focuses on three complementary strategic objectives:

Responsible supply chains

Scaling up on systems and services that responsibly and transparently prevent and address child labour and forced labour.

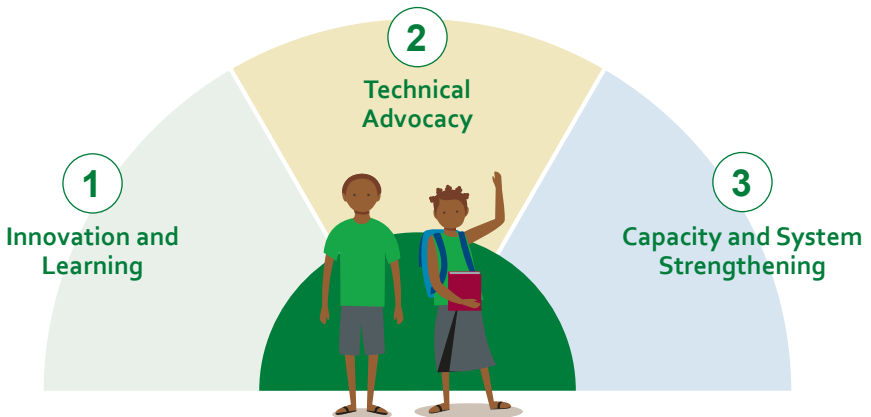
Supportive enabling environment

Promoting national and international legislations that advance responsible business conduct, and policies that drive access to quality education and social protection among others.

Coordinated approaches to support collaboration

Fostering alignment and integrated approaches so that all actors and systems operate as part of an efficient, coherent, and coordinated multi-stakeholder effort.

In order to achieve these objectives, ICI's work is focused on three main areas:



What's in it for you?

1. Innovation and Learning

ICI members can participate in ICI's collective research, learning and innovation agenda, and can benefit from:

- Getting involved in pilot projects and innovative approaches, and learning from new studies and analyses, for example on the impact of cash transfers on child labour and the links between quality education and child labour.
- Contributing to developing common indicators and shared metrics (for example for sector-wide reporting in order to advance accountability) and tools (such as community assessment tools, forced labour tools, child labour risk model for cooperatives and others).
- Participating in knowledge-sharing sessions for members and partners at global and national levels.



Example

Forced labour pilot project

One of ICI's current pilot projects focuses on forced labour. Within it, ICI aims to adapt, develop, and test approaches and tools to better identify, prevent and respond to forced labour risks. While the pilot is still ongoing, preliminary results suggest that community level mediation combined with employee-worker contracts, can be an important first step in improving working conditions and lowering forced labour risk.

2. Technical Advocacy

ICI members can contribute to, and benefit from, ICI's technical advocacy efforts, which include:

- Informing effective policies and standards to ensure they build on evidence, reflect best practices and are aligned with ICI's strategy and theory of change.
- Engaging with cocoa platforms and partners worldwide; donors; as well as governments in cocoa-producing and consuming countries, fostering alignment among stakeholders with the aim of reducing contradictory expectations and requirements.
- Resource mobilisation to increase investment in activities to tackle child labour and forced labour in cocoa. As an ICI member, you can participate in joint funding opportunities.



Example

Human Rights Due Diligence legislation

To foster a supportive environment that promotes responsible business conduct, ICI advocates for ambitious and harmonised Human Rights Due Diligence legislation at the European level and beyond, providing its members with regular policy and legislative development updates. ICI also engages closely with the EU in the roll-out of the Roadmap of the Alliance for Sustainable Cocoa.

3. Capacity & Systems Strengthening

ICI members can leverage ICI's technical expertise and operational capacity to set-up and reinforce their processes aimed at identifying and addressing child labour and forced labour across their supply chain. As an ICI member, you can:

- Take advantage of ICI's expertise and tailored support.
- Access technical and operational support to implement community development approaches and supply chain mechanisms to prevent, monitor and address child labour and forced labour.
- Draw on ICI's experience developing and coordinating prevention and remediation activities, for example, Village Savings and Loans Associations (VSLAs), cash transfers and landscape projects.
- Participate in training and capacity building on child labour and forced labour.



Example

Support to national authorities in Ghana and Côte d'Ivoire

ICI works closely with the governments of Ghana and Côte d'Ivoire in support of strengthened national systems and coordinated approaches. This includes, for example, supporting the development and roll-out of National Action Plans and strategies, reviewing Hazardous Activities Frameworks, advising on national traceability systems, or training various governmental bodies.

Services for our members

	ICI members	ICI members in bilateral projects
Full access to guiding materials and tools, as well as support on how to use them	●	●
Participate in efforts to mobilise joint funding	●	●
Participate in developing tools and collaborative projects	●	●
Policy engagement and regular updates on the latest developments	●	●
Support with external communication and engagement	●	●
Basic tailored support, learning, and sharing sessions	●	●
Specific tailored support, assessment, evaluation, and capacity building for new and existing programmes	-	●
Further operational support, project, and programme implementation (e.g. child labour prevention and remediation projects, community development)	-	●

Membership benefits



Make a concrete contribution to improving the lives of children and communities by supporting innovative projects and research.



Learn about what works by accessing expert knowledge and engaging in industry-wide dialogue.



Improve transparency and accountability in the cocoa sector.



Keep up to date on policy, legislative, and sectoral developments, as well as the latest innovations and good practices.

Join us

Our organisation has offices in Cote d'Ivoire, Ghana and Switzerland, where our team members work together to advance the rights of children and adults in cocoa-growing communities. Our team operates from both country headquarters and field offices, enabling us to have first-hand knowledge of the realities on the ground and better respond to the needs of cocoa-growing communities.

Abou Camille
Individual farmer
representative



FERRERO



GCB



GLOBAL MARCH
Against Child Labour
Contre le Travail Forcé des
Enfants

Guittard

HERSHEY'S

idilia
FOODS

INDCRESA
PRODUCTOS DEL CACAO

ITOCHU
GROUP

JACOBS
FOUNDATION
Our Promise to Youth

Kellanova

LINDT & SPRÜNGLI

M&S
EST. 1884

MARS
WRIGLEY

meiji

Mondelēz
International



Natra



ofi
make it real



RAINFORREST
ALLIANCE

Save the Children

Solidaridad



S&D SUCDEN

Toms

TONY'S
CHOCOLONELY



Transcso



VERITÉ
For Labor Movements



Walter
Matter
coffee & cocoa specialists

WAO-Afrique
(Action to Stop Child Exploitation)

Board advisors

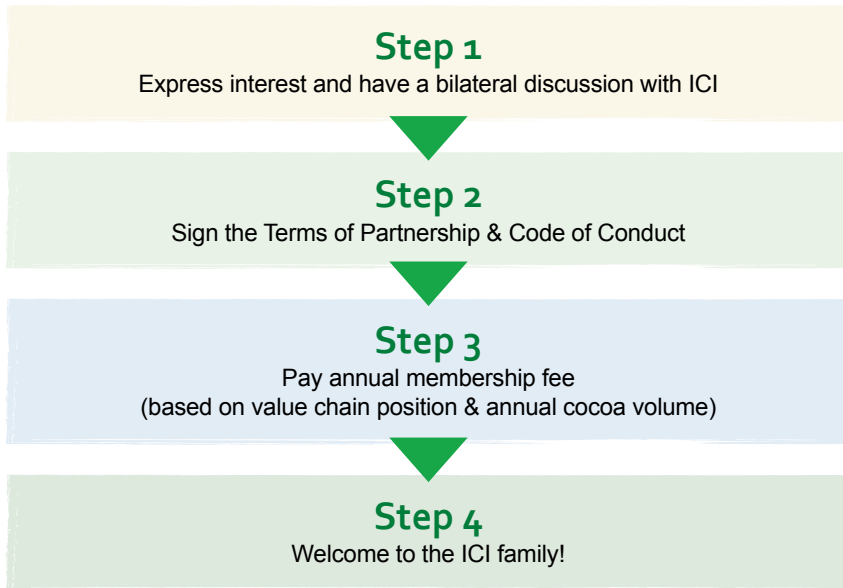


unicef

UNITED NATIONS
HUMAN RIGHTS
OFFICE OF THE HIGH COMMISSIONER

How to join

To become an ICI member, get in touch by sending an email to membership@cocoainitiative.org and we will set up an introductory call.



www.cocoainitiative.org

ICI Secretariat in Switzerland

Chemin de Balxert 9
1219 Châtelaine | Switzerland
+41 22 341 47 25

ICI National Office in Côte d'Ivoire

Il Plateaux, 7ème Tranche, Lot 3244, Ilot 264
Abidjan-Cocody | Côte d'Ivoire
+225 27 22 52 70 97

ICI National Office in Ghana

No. 16, Djanie Ashie Street
East-Legon | Accra | Ghana
+233 302 998 870



International
COCOA
Initiative